

Technical Data Sheet



TOP MOUNTED BALL TYPE UNDERBODY HOIST

The UBB series hoist is manufacture from the highest quality hot rolled seamless tube, machined to exacting tolerances.

Ideal for rear, side or 3 way tipping applications, these hoists can be used for payloads up to 28 tones.

Product Features

- Compact Size
- Easily installed under tipper body
- All stages are chrome plated externally to increase working life.
- Quality Delrin bearings are used on inner and outer sliding sections to ensure long life and trouble free operation.
- All seals are high quality distortion-proof polyurethane.
- All upper and lower stops are steel and machined on the tubes to ensure reliable service.

POWAUTO

DAVID BROWN
HYDRAULICS

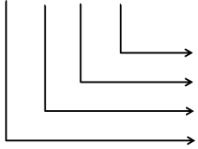
HYDRECO[®]

HYDRECO
POWAUTO
HYDRAULIC SOLUTIONS PROVIDER

www.hydreco.com

MODEL DESIGNATION

UBB127-6-1020



**STROKE
STAGES
OUTER BARREL SIZE
SERIES UBB**

Hoist Capacity including body is calculated assuming a free flowing load, a minimum tipping angle of 47° and a maximum tipping of 51°

Always allow 20mm extension of the top stage when body is in the fully lowered position to prevent the body riding on the hoist and damaging the hoist

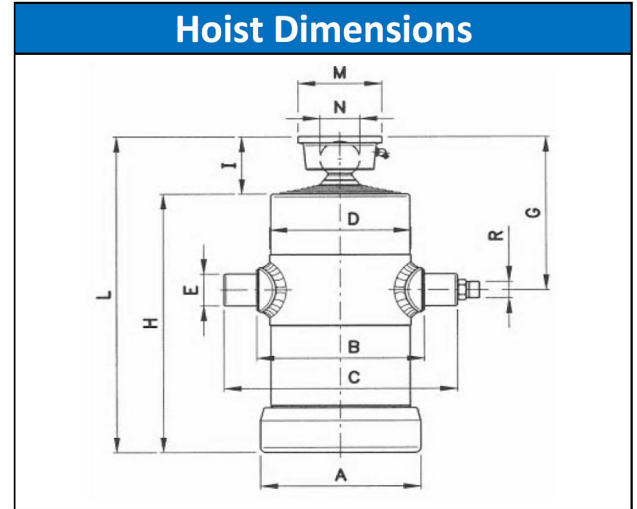
Notes

Maximum working pressure 160 BAR (2300 PSI)

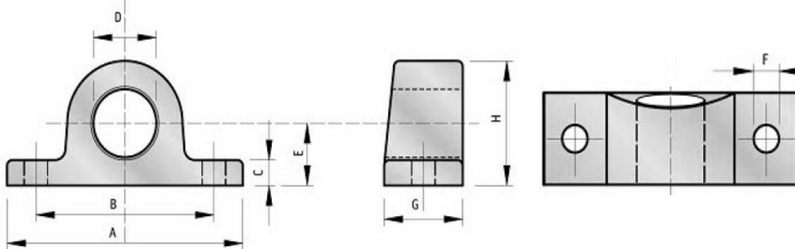
Maximum relief valve pressure 180 Bar(2600 PSI)

Recommended oil ISO 32 to ISO 68

Always fit a return filter to the hydraulic system



Designation	Stages	Stroke	Stage Diameter (mm)										Nominal 100 BAR	Rated 160 BAR	Ideal Pivot Centres	Dimensions (mm)										Weight kg	Swept Volume litres		
			32	46	61	72	76	91	107	127	146	166				A	B	C	D	E	G	H	I	L	M			N	R
UBB95-3-500	3	500		o	o		o						3	4.8	565	110	115	200	95	35	142	245	69	314	100	45	1/2"	14	2.0
UBB114-4-850	4	850		o	o		o	o					5	8	980	130	135	220	114	35	142	289	71	360	100	45	1/2"	22	4.2
UBB127-4-1500	4	1500			o		o	o	o				8	12.8	1745	145	150	232	127	40	153	454	84	538	115	55	1/2"	40	10.3
UBB127-4-1700	4	1700			o		o	o	o				8	12.8	1980	145	150	232	127	40	153	504	84	588	115	55	1/2"	44	11.6
UBB127-4-2000	4	2000			o		o	o	o				8	12.8	2335	145	150	232	127	40	153	579	84	663	115	55	1/2"	53	13.5
UBB127-5-1050	5	1050		o	o		o	o	o				5	8	1215	145	150	232	127	40	142	288	73	361	100	45	1/2"	26	6.5
UBB127-5-1250	5	1250		o	o		o	o	o				5	8	1450	145	150	232	127	40	142	328	73	401	100	45	1/2"	29	7.6
UBB127-5-1500	5	1500		o	o		o	o	o				5	8	1745	145	150	232	127	40	142	378	73	451	100	45	1/2"	33	9.0
UBB127-5-2150	5	2150		o	o		o	o	o				5	8	2510	145	150	232	127	40	142	508	73	581	100	45	1/2"	41	12.6
UBB127-5-2500	5	2500		o	o		o	o	o				5	8	2925	145	150	232	127	40	142	578	73	651	100	45	1/2"	45	14.6
UBB127-6-850	6	850	o	o	o		o	o	o				5	8	980	145	150	232	127	40	142	218	73	291	100	45	1/2"	21	4.9
UBB127-6-1020	6	1020	o	o	o		o	o	o				5	8	1180	145	150	232	127	40	142	247	73	320	100	45	1/2"	23	5.6
UBB152-5-1500	5	1500			o		o	o	o	o			9	14.4	1745	170	175	262	152	45	155	391	86	477	115	55	1/2"	50	13.1
UBB152-5-2150	5	2150			o		o	o	o	o			9	14.4	2510	170	175	262	152	45	155	521	86	607	115	55	1/2"	61	18.3
UBB152-5-2500	5	2500			o		o	o	o	o			9	14.4	2925	170	175	262	152	45	155	591	86	676	115	55	1/2"	70	21.0
UBB152-6-1500	6	1500		o	o		o	o	o	o			6	9.6	1745	170	175	262	152	45	144	343	75	418	100	45	1/2"	38	11.9
UBB152-6-1800	6	1800		o	o		o	o	o	o			6	9.6	2100	170	175	262	152	45	144	393	75	468	100	45	1/2"	43	13.9
UBB152-6-3000	6	3000		o	o		o	o	o	o			6	9.6	3515	170	175	262	152	45	144	593	75	668	100	45	1/2"	62	22.2
UBB193-6-1800	6	1800				o		o	o	o	o	o	18	28.8	2100	220	230	320	193	50	247	406	96	52	107	65	3/4"	84	25.5
UBB193-6-2220	6	2220				o		o	o	o	o	o	18	28.8	2595	220	230	320	193	50	247	476	96	572	107	65	3/4"	96	30.9
UBB193-6-3000	6	3000				o		o	o	o	o	o	18	28.8	3515	220	230	320	193	50	247	606	96	702	107	65	3/4"	118	40.8



Hoist Mount Dimensions (mm)									
Part No.	A	B	C	D	E	F	G	H	kg
UBFM-35	130	95	12	36	30	13	40	56	0.9
UBFM-40	140	108	15	41	33	15	45	66	1.2
UBFM-45	140	108	15	46	33	15	45	66	1.2
UBFM-50	150	116	15	51	36	15	45	71	1.4

POWAUTO

DAVID BROWN
HYDRAULICS

HYDRECO

HYDRECO
POWAUTO
HYDRAULIC SOLUTIONS PROVIDER

www.hydreco.com