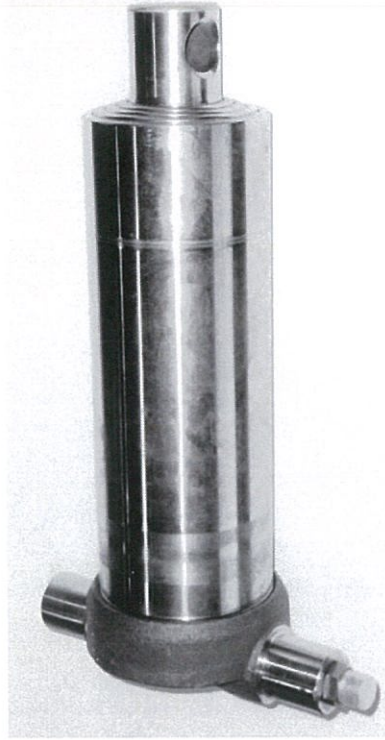


# TECHNICAL DATA SHEET



## BOTTOM MOUNTED EYE TYPE UNDERBODY HOIST

The UBB series hoist is manufactured from the highest quality hot rolled seamless tube, machined to exacting tolerances.

Ideal for rear, side or 3 way tipping applications, these hoists can be used for payloads up to 14 tones.

## UBE SERIES UNDERBODY HOIST

### PRODUCT FEATURES

Compact Size

Easily installed under the tipper body.

The telescopic extension stages are roller-burnished then chrome plated externally and roller-burnished internally increasing working life.

Quality delrin bearings are used on inner and outer sliding sections to ensure long life and trouble free operation.

All seals are high quality distortion-proof polyurethane.

All upper and lower stops are steel and ma-

DEALER:

# TECHNICAL DATA SHEET

Hoist Capacity including body is calculated assuming a free flowing load, a minimum tipping angle of 47° and a maximum tipping angle of 51°.

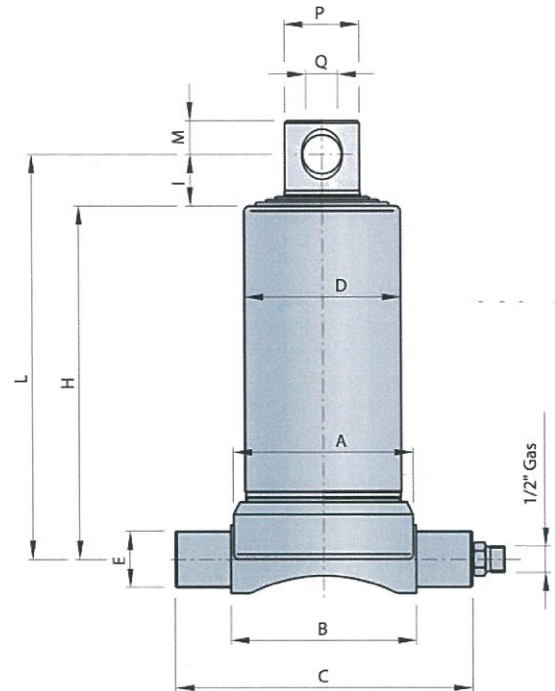
Lift capacity is calculated at 160 Bar (2300 psi)  
Maximum relief valve setting is 180 Bar (2600 psi)

Always allow **20mm** extension of the top stage when body is in the fully lowered position to prevent the body riding on the hoist and damaging the hoist.

## Notes

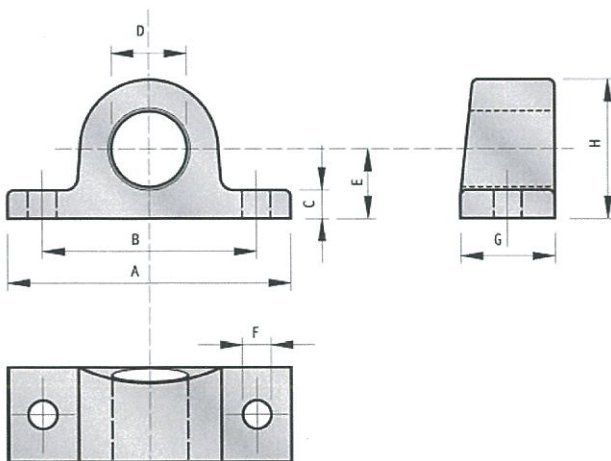
Maximum working pressure 160 Bar (2300 psi)  
Maximum relief valve pressure 180 Bar (2600 psi)  
Recommended oil ISO 32 to ISO 68.  
Always fit a return filter to the hydraulic system.

## HOIST DIMENSIONS



Hoist Model	Stages	Stroke in mm	Stage Diameter (mm)					Capacity in Tonnes @ 50°			Dimensions (mm)										Weight kg	Swept Volume litres	
			46	61	76	91	107	Nominal 100 Bar	Rated 160 Bar	Ideal Pivot	A	B	C	D	E	H	I	L	M	P			Q
UBE127-4-1200	4	1200		O	O	O	O	8	12.8	1390	145	150	240	127	45	380	33	421	27	60	31	34	8.4
UBE127-4-1500	4	1500		O	O	O	O	8	12.8	1745	145	150	240	127	45	456	33	497	27	60	31	39	10.3
UBE127-4-1700	4	1700		O	O	O	O	8	12.8	1980	145	150	240	127	45	506	33	547	27	60	31	43	11.6

## CYLINDER MOUNTS



## CYLINDER MOUNT DIMENSIONS (mm)

PART #	A	B	C	D	E	F	G	H	Kg
UBFM-45	140	108	15	45.5	33	15	45	66	1.2